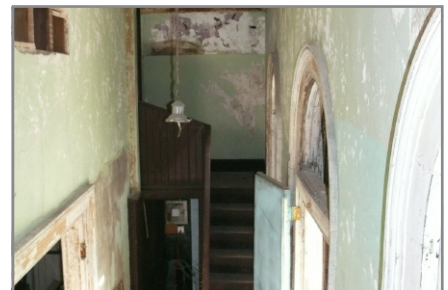


MT. HOPE MINERS' CHURCH

MT. HOPE, ROCKAWAY, MORRIS COUNTY, NEW JERSEY



The Mt. Hope Miners' Church was constructed in 1868 by the Mount Hope Mining Company for its miners, and is a vernacular wood-frame church building detailed with elements of the Italianate style. It is a representative example of the role and influence the mining companies had on their workers and their families as well as their role in the development of villages like Mount Hope in the mid-nineteenth to the early-twentieth centuries. The building retains early and original features and finishes at the exterior and interior.



- Services: National Register Nomination, Historic Preservation Plan and design and Contract Documents for Restoration of the school addition.
- Total Grant Funding: \$23,738 (Morris County)
- Total Project Costs: \$70,300